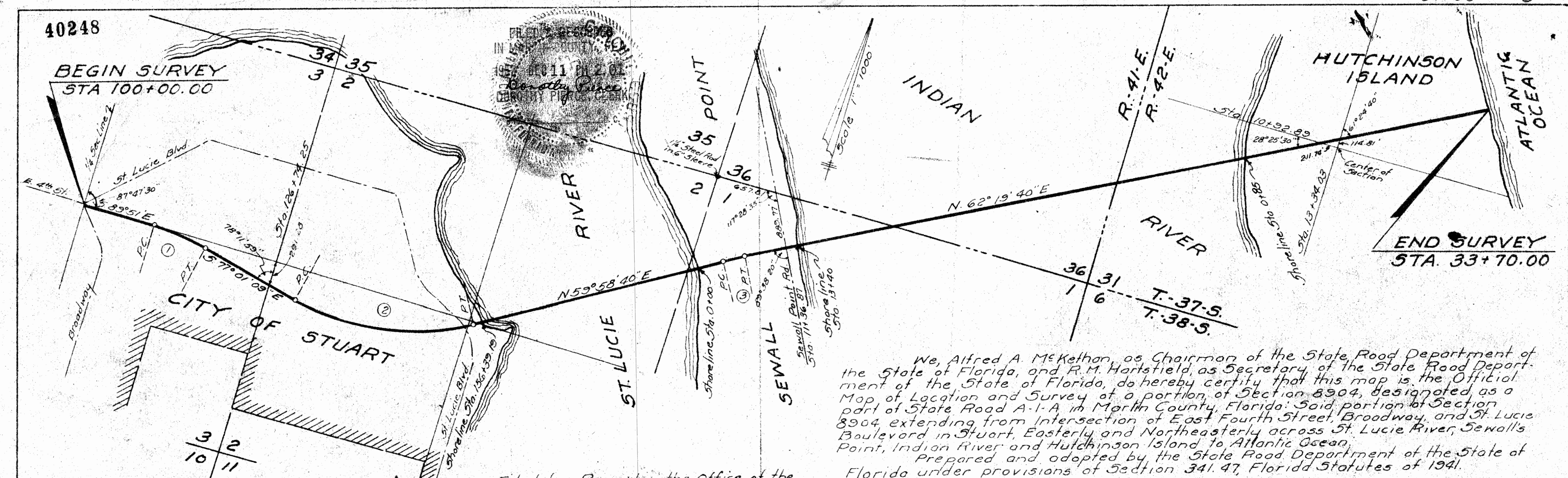


40248

BEGIN SURVEY  
STA 100+00.00

END SURVEY  
STA. 33+70.00



Curve No 1	Curve No 2	Curve No 3
PI Sta. 113+29.96	PI Sta. 143+91.70	PI Sta. 4+68.65
Δ 12° 49' 51" Ht	Δ 43° 00' 11" Lt	Δ 2° 21' Rt
D 1° 45'	D 1° 45'	D 1° 00'
T 368.15'	T 1289.83'	T 117.52'
L 733.00'	L 2457.32'	L 235.00'
PC Sta. 109+61.81	PC Sta. 131+01.87	PC Sta. 3+51.13
PT Sta. 116+95.00	PT Sta. 155+59.19	PT Sta. 5+86.13

Filed for Record in the Office of the  
Clerk of the Circuit Court for the  
County of Martin, State of Florida, in  
Map Book 2, Page 11, on the 11th  
day of December, A.D. 1952.

*Josephine Pierce*  
Clerk of the Circuit Court  
Martin County, Florida

We, Alfred A. McKethan, as Chairman of the State Road Department of the State of Florida, and R.M. Hartsfield, as Secretary of the State Road Department of the State of Florida, do hereby certify that this map is the Official Map of Location and Survey of a portion of Section 8904, designated as a part of State Road A-1-A in Martin County, Florida; said portion of Section 8904 extending from Intersection of East Fourth Street, Broadway, and St. Lucie Boulevard in Stuart, Easterly and Northeasterly across St. Lucie River, Sewall's Point, Indian River and Hutchinson Island to Atlantic Ocean.  
Prepared and adopted by the State Road Department of the State of Florida under provisions of Section 341.47, Florida Statutes of 1941.

*Alfred A. McKethan*  
Chairman State Road Department

*R.M. Hartsfield*  
Secretary State Road Department

Sec. 8904, Rd. A-1-A, Martin County